

# LEONARD BASKIN

## *A BASKIN BESTIARY*

*"Baskin's later work is richer and richer in the flora and fauna of the natural world."*

Ted Hughes, Poet Laureate of the United Kingdom

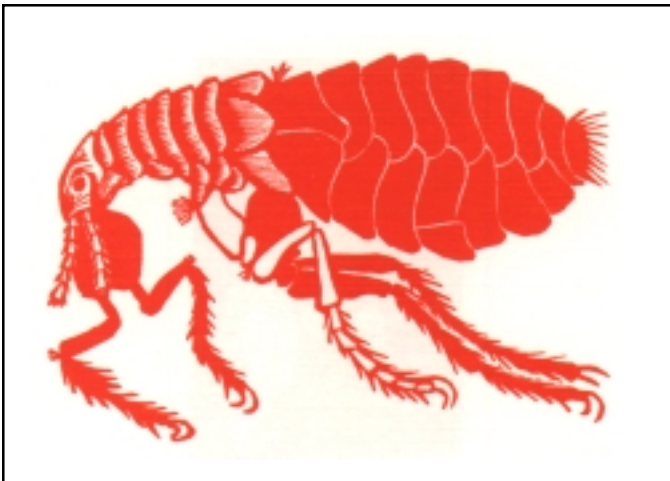
(All of the prints are signed in pencil by the artist.)



**BEETLE.** Wood engraving. 1951.  
5.5 x 3.8 cm. (Paper size: 25.3 x 24 cm.)  
Printed in orange on Sekishu paper.  
*Fern & O'Sullivan*, no. 100.



**CROWS.** Wood engraving. 1951.  
10.5 x 13 cm. (Paper size: 30.5 x 33 cm.)  
Printed in black on Sekishu paper.  
*Fern & O'Sullivan*, no. 103.



**FLEA.** Linocut. 1951.  
9.5 x 13.2 cm. (Paper size: 30.5 x 33 cm.)  
Printed in orange on Sekishu paper.  
*Fern & O'Sullivan*, no. 105.



**MANDRILL. (Baboon).** Linocut. 1951.  
9.8 x 11.8 cm. (Paper size: 29.8 x 33.4 cm.)  
Printed in black on Sekishu paper.  
*Fern & O'Sullivan*, no. 111.



**STILL LIFE.** Wood engraving. 1953.  
5.4 x 7.5 cm. (Paper size: 25.5 x 28.3 cm.)  
Printed in black on Sekishu paper.  
*Fern & O'Sullivan*, no. 227.



**RAMPANT BEAST.** Etching. 1970.  
45 x 30 cm. (Paper size: 75 x 53 cm.)  
Printed in black on Vélín d'Arches paper.  
Edition of 90. *Fern & O'Sullivan*, no. 559.



**BOAR.** Wood engraving. 1957.  
6.7 x 14.7 cm. (Paper size: 26.9 x 35.3 cm.)  
Printed in black on Sekishu paper.  
*Fern & O'Sullivan*, no. 304.



**LION.** Wood engraving. 1954.  
6 x 3.5 cm. (Paper size: 26.9 x 23.5 cm.)  
Printed in orange on Sekishu paper for the  
1958 edition, without the ex-libris text.  
*Fern & O'Sullivan*, no. 245.



**STAG.** Wood engraving. 1957.  
8.2 x 7.7 cm. (Paper size: 27.9 x 28.5 cm.)  
Printed in black on Sekishu paper.  
*Fern & O'Sullivan*, no. 306.