

ALAN WOF SY FINE ARTS



04-1260 **Après le tub. (Nude dressing after her bath).**  
\$275.00

Paris: Gustave Pellet, 1911.  
Drypoint. 205 x 150 mm. One of 50 impressions on laid paper with the Pellet-Legrand- Swan- fleur de lys watermark. Signed and numbered in pencil by the artist. With the red stamp of the publisher, Gustave Pellet (Lugt. 1193). Bibliothèque Nationale, Inventaire, Tome 13, 1965, no. 179.



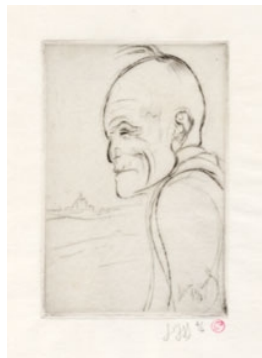
02-1179 **Baigneuse.**

\$525.00 Paris: Gustave Pellet, 1911.  
Drypoint. 220 x 155 mm. One of 4 impressions on vellum, signed and numbered in pencil by the artist. With the red stamp of the publisher, Gustave Pellet (Lugt. 1193). Bibliothèque Nationale, Inventaire, Tome 13, 1965, no. 169.



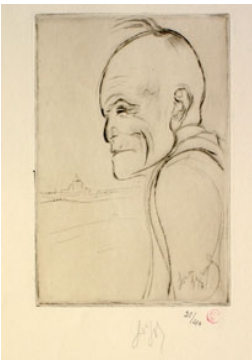
02-1184 **Devant sa glace.**

\$475.00 Paris: Gustave Pellet, 1911.  
Drypoint. 200 x 150 mm. One of 4 impressions on vellum, signed and numbered in pencil by the artist. With the red stamp of the publisher, Gustave Pellet (Lugt. 1193). Bibliothèque Nationale, Inventaire, Tome 13, 1965, no. 176.



02-1187 **Fantaisie sur Guénard.**

\$300.00 Paris: Gustave Pellet, 1911.  
Drypoint. 150 x 100 mm. One of 4 impressions on vellum, signed and numbered in pencil by the artist. With the red stamp of the publisher, Gustave Pellet (Lugt. 1193). Bibliothèque Nationale, Inventaire, Tome 13, 1965, no. 175.



04-1258 **Fantaisie sur Guénard.**

\$175.00 Paris: Gustave Pellet, 1911.

Drypoint. 151 x 102 mm. One of 40 impressions on laid paper with the Pellet-Legrand- Swan- fleur de lys watermark. Signed and numbered in pencil by the artist. With the red stamp of the publisher, Gustave Pellet (Lugt. 1193). Bibliothèque Nationale, Inventaire, Tome 13, 1965, no. 175.



02-1188 **Flore artificielle.**

\$125.00 Paris: Gazette des Beaux-Arts, 1896.

Etching. 260 x 165 mm. As published in The Gazette des Beaux-Arts, Sept., 1896. Bibliothèque Nationale, Inventaire, Tome 13, 1965, no. 75.



04-1255 **Femme couché tirant son bas. (Barebreasted Woman put on her stockings).**

\$375.00 Paris: Gustave Pellet, 1912.

Drypoint. 165 x 205 mm. One of 30 impressions on laid paper with the Pellet-Legrand- Swan- fleur de lys watermark. Signed and numbered in pencil by the artist. With the red stamp of the publisher, Gustave Pellet (Lugt. 1193). Bibliothèque Nationale, Inventaire, Tome 13, 1965, no. 197.



04-1264 **Fumeuse à la Guitare. (woman smoking with guitars).**

\$425.00 Paris: Gustave Pellet, 1911.

Drypoint. 150 x 102mm. One of 50 impressions on laid paper with the Pellet-Legrand- Swan- fleur de lys watermark. Signed and numbered in pencil by the artist. With the red stamp of the publisher, Gustave Pellet (Lugt. 1193). Bibliothèque Nationale, Inventaire, Tome 13, 1965, no. 184.



02-1189 **Fleur de Lit.**

\$125.00 Paris: 1896.

Etching. 265 x 165 mm. As published in Louis Legrand, peintre graveur. Bibliothèque Nationale, Inventaire, Tome 13, 1965, no. 76.



02-1186 **Guénard, notre garde.**

\$300.00 Paris: Gustave Pellet, 1911.

Drypoint. 150 x 100 mm. One of 4 impressions on vellum, signed and numbered in pencil by the artist. With the red stamp of the publisher, Gustave Pellet (Lugt. 1193). Bibliothèque Nationale, Inventaire, Tome 13, 1965, no. 174.



04-1257 **Guénard, notre garde.**

\$175.00 Paris: Gustave Pellet, 1911.

Drypoint. 150 x 100 mm. One of 50 impressions on laid paper with the Pellet-Legrand- Swan- fleur de lys watermark. Signed and numbered in pencil by the artist. With the red stamp of the publisher, Gustave Pellet (Lugt. 1193). Bibliothèque Nationale, Inventaire, Tome 13, 1965, no. 174.



04-1265 **Le Bedeau du Mée. (Portrait of a Verge).**

\$325.00 Paris: Gustave Pellet, 1911.

Drypoint. 370 x 270 mm. First state of 4. One of 11 impressions printed in sepia on laid paper with the Pellet- Legrand- Swan- fleur de lys watermark. Signed and numbered in pencil by the artist. With the red stamp of the publisher, Gustave Pellet (Lugt. 1193). Bibliothèque Nationale, Inventaire, Tome 13, 1965, no. 192.



02-1190 **La Loge.**

\$125.00 Paris: Gazette des Beaux-Arts, 1911.

Etching. 260 x 165 mm. As published in *The Gazette des Beaux-Arts*, 1911. Bibliothèque Nationale, Inventaire, Tome 13, 1965, no. 148.



04-1263 **Le Chaffeur. (Man in driving attire smoking a pipe with fashionably dressed woman).**

\$425.00

Paris: Gustave Pellet, 1911.

Drypoint. 404 x 278mm. One of 50 impressions on laid paper with the Pellet-Legrand-Swan-fleur de lys watermark. Signed and numbered in pencil by the artist. With the red stamp of the publisher, Gustave Pellet (Lugt. 1193). Bibliothèque Nationale, Inventaire, Tome 13, 1965, no. 188.



04-1261 **Lawn-Tennis. (Reclining tennis player with her dog).**

\$275.00

Paris: Gustave Pellet, 1911.

Drypoint. 161 x 210 mm. One of 50 impressions on laid paper with the Pellet-Legrand-Swan-fleur de lys watermark. Signed and numbered in pencil by the artist. With the red stamp of the publisher, Gustave Pellet (Lugt. 1193). Bibliothèque Nationale, Inventaire, Tome 13, 1965, no. 180.



04-1262 **Le Mée. (Woman picking flowers outside a village).**

\$275.00 Paris: Gustave Pellet, 1911.  
Drypoint. 150 x 210 mm. One of 50 impressions on laid paper with the Pellet-Legrand-Swan-fleur de lys watermark. Signed and numbered in pencil by the artist. With the red stamp of the publisher, Gustave Pellet (Lugt. 1193). Bibliothèque Nationale, Inventaire, Tome 13, 1965, no. 185.



02-1180 **Madame D. de Face.**

\$475.00 Paris: Gustave Pellet, 1911.  
Drypoint. 212 x 127 mm. One of 4 impressions on vellum, signed and numbered in pencil by the artist. With the red stamp of the publisher, Gustave Pellet (Lugt. 1193). Bibliothèque Nationale, Inventaire, Tome 13, 1965, no. 172.



02-1185 **Madame Desrouchier et son chien.**

\$475.00 Paris: Gustave Pellet, 1905-1911.  
Drypoint. 200 x 150 mm. One of 4 impressions on vellum, signed and numbered in pencil by the artist. With the red stamp of the publisher, Gustave Pellet (Lugt. 1193). Bibliothèque Nationale, Inventaire, Tome 13, 1965, no. 176.



02-1183 **Pocharde. (Nude prostitute in a provocative pose).**

\$475.00 Paris: Gustave Pellet, 1911.  
Drypoint. 205 x 150 mm. One of 4 impressions on vellum, signed and numbered in pencil by the artist. With the red stamp of the publisher, Gustave Pellet (Lugt. 1193). Bibliothèque Nationale, Inventaire, Tome 13, 1965, no. 177.



04-1259 **Pocharde. (Nude prostitute in a provocative pose).**

\$275.00 Paris: Gustave Pellet, 1911.  
Drypoint. 205 x 150 mm. One of 50 impressions on laid paper with the Pellet-Legrand-Swan-fleur de lys watermark. Signed and numbered in pencil by the artist. With the red stamp of the publisher, Gustave Pellet (Lugt. 1193). Bibliothèque Nationale, Inventaire, Tome 13, 1965, no. 177.



02-1181 **Sieste.**

\$475.00 Paris: Gustave Pellet, 1911.  
Drypoint. 100 x 150 mm. One of 5 impressions on vellum, signed and numbered in pencil by the artist. With the red stamp of the publisher, Gustave Pellet (Lugt. 1193). Bibliothèque Nationale, Inventaire, Tome 13, 1965, no. 170.



04-1256 **Titi, ma petite chatte. bien-aimée. (The artist's cat).**  
\$475.00

Paris: Gustave Pellet, 1912.

Drypoint. 200 x 2160 mm. One of 50 impressions on laid paper with the Pellet-Legrand- Swan- fleur de lys watermark. Signed and numbered in pencil by the artist. With the red stamp of the publisher, Gustave Pellet (Lugt. 1193). Bibliothèque Nationale, Inventaire, Tome 13, 1965m no. 194. Exsteens, no. 320.