

ALAN WOFSY FINE ARTS

Carlos Merida - Serigraphs



99-0038 **Charro y Sarape de Saltillo de Coahuila.**
\$175.00 Serigraph in colors 45 x 33 cm. (17-3/4 x 13 inches). From Trajes Regionales Mexicanos. Mexico, D.F., Editorial Atlante, [1945]. Signed in the Plate. Before lettering of title.



99-0045 **Mazateca del Estado de Oaxaca.**
\$175.00 Serigraph in colors 45 x 33 cm. (17-3/4 x 13 inches). From Trajes Regionales Mexicanos. Mexico, D.F., Editorial Atlante, [1945]. Signed in the Plate.



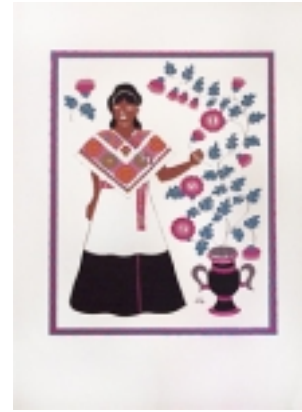
99-0048 **Huasteca del Estado de San Luis Potosí.**
\$175.00 Serigraph in colors 45 x 33 cm. (17-3/4 x 13 inches). From Trajes Regionales Mexicanos. Mexico, D.F., Editorial Atlante, [1945]. Signed in the Plate. Before lettering of title.



99-0041 **Mestiza de Chiapas.**
\$175.00 Serigraph in colors 45 x 33 cm. (17-3/4 x 13 inches). From Trajes Regionales Mexicanos. Mexico, D.F., Editorial Atlante, [1945]. Signed in the Plate. Before lettering of title.



99-0051 **Mestiza del Estado de Yucatán.**
\$175.00 Serigraph in colors 45 x 33 cm. (17-3/4 x 13 inches). From Trajes Regionales Mexicanos. Mexico, D.F., Editorial Atlante, [1945]. Signed in the Plate. Before lettering of title.



99-0047 **Otomí de la Sierra del Estado de Puebla.**
\$175.00 Serigraph in colors 45 x 33 cm. (17-3/4 x 13 inches). From Trajes Regionales Mexicanos. Mexico, D.F., Editorial Atlante, [1945]. Signed in the Plate. Before lettering of title.



99-0037 **Mestiza de Campeche.**
\$175.00 Serigraph in colors 45 x 33 cm. (17-3/4 x 13 inches). From Trajes Regionales Mexicanos. Mexico, D.F., Editorial Atlante, [1945]. Signed in the Plate. Before lettering of title.



99-0050 **Papantla del Estado de Veracruz.**
\$175.00 Serigraph in colors 45 x 33 cm. (17-3/4 x 13 inches). From Trajes Regionales Mexicanos. Mexico, D.F., Editorial Atlante, [1945]. Signed in the Plate. Before lettering of title.



99-0042 **Músicos de Atotonilco de Guanajuato.**
\$175.00 Serigraph in colors 45 x 33 cm. (17-3/4 x 13 inches). From Trajes Regionales Mexicanos. Mexico, D.F., Editorial Atlante, [1945]. Signed in the Plate.



99-0044 **Pescadores de Pátzcuaro del Estado de Michoacán.**
\$175.00 Serigraph in colors 45 x 33 cm. (17-3/4 x 13 inches). From Trajes Regionales Mexicanos. Mexico, D.F., Editorial Atlante, [1945]. Signed in the Plate.



99-0043 **Purépecha del Estado de Michoacán.**
\$175.00 Serigraph in colors 45 x 33 cm. (17-3/4 x 13 inches). From Trajes Regionales Mexicanos. Mexico, D.F., Editorial Atlante, [1945]. Signed in the Plate.



99-0040 **Tetzales de Chiapas.**
\$175.00 Serigraph in colors 45 x 33 cm. (17-3/4 x 13 inches). From Trajes Regionales Mexicanos. Mexico, D.F., Editorial Atlante, [1945]. Signed in the Plate. Before lettering of title.



99-0049 **Zongolica del Estado de Veracruz.**
\$175.00 Serigraph in colors 45 x 33 cm. (17-3/4 x 13 inches). From Trajes Regionales Mexicanos. Mexico, D.F., Editorial Atlante, [1945]. Signed in the Plate. Before lettering of title.