

ALAN WOFSY FINE ARTS

Old Master Prints



01-0857 Bonasone, Giulio. (Manner of) or School
\$1200.00 **Bacchus Seated. Drinking from a cup presented by a putto.**
Bartsch, XV, no. 3. Engraving. 135 x 145 mm.



01-0861 Holbein, Hans.
\$400.00 **Erasmus.**
Woodcut from Cosmographie Universelle by Sebastian Munster, 1548-1556. 12 x 10 cm. on page 30 x 20 cm.



01-0865 Bonasone, Giulio.
\$750.00 **Leda and the Swan.**
Bartsch, XV, no. 140. Engraving. 169 x 86 mm.
Wid margins.



01-0864 Master of the Die.
\$500.00 **The Two Gladiators.**
Engraving. 203 x 231 mm., A few marginal stains. Bartsch XV, 77.



01-0858 Bonasone, Giulio. (Manner of) or School
\$1500.00 **A Putto presenting grain to Ceres.**
Bartsch, XV, no. 2. Engraving. 133 x 154 mm.



01-0863 Master of the Die.
\$500.00 **Peneus being consoled by other River Gods on the loss of his daughter.**
Engraving. 245 x 179 mm. Without numbering. Reworked plate by Thomassin. Bartsch, XV, 22-l. From a set of four.



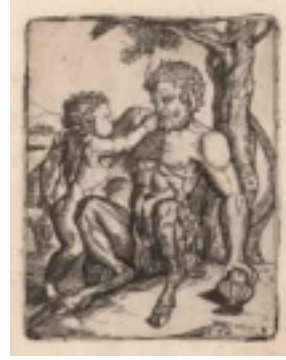
01-0868 Raimondi, Marcantonio.
\$650.00 **Christ taking leave of his Mother.**
Engraving after Dürer. 290 x 210 mm.
Bartsch, XIV, no. 636. From the Life of
the Virgin.



01-0867 Raimondi, Marcantonio.
\$650.00 **The Flight into Egypt.**
Engraving after Dürer. From the Life of the
Virgin. Small loss, upper right corner. 290 x
208 mm. Bartsch, XIV, no. 634.



01-0860 Raimondi, Marcantonio.
\$750.00 **Man carrying the base of a column.**
Engraving. Trimmed to the subject,
backed. 230 x 140 mm. Bartsch, XIV, no.
477.



01-0866 Monogrammist FV after Raimondi,
\$600.00 **Satyr and Child.**
Engraving. 124 x 96 mm. Nagler, Die
Monogrammister, II, no. 2537. Copy if
reverse of Raimondi, Marcantonio. Bartsch,
XIV, no. 281, which is itself after
Raphael..



01-0859 Ravenna, Marco da.
\$750.00 **Saint Michael and the Demon.**
Engraving. Trimmed to the subject,
backed. 250 x 177 mm. Bartsch, XIV, no.
105. From the collection of Dr. Edward
Peart, Lugt 892.



01-0862 Woeiriot, Pierre.
\$600.00 **Perillus condemned to the bronze bull by
Phalaris.**
Engraving. Robert-Dumesnil, 7.205. Fleur
de lys watermark. Later impression.