

ALAN WOFSY FINE ARTS

Millard Sheets - Murals



03-0049 Sheets, Millard.
\$2800.00 **Man's Labor and his Family are secured, protected in confidence, with personal insurance.**
Pastel and crayon. Circa 1950s. 10.5 x 32 inches. Signed in pencil by the artist. Annotated and authenticated by Tony Sheets, the artist's son in 2003. Mosaic design for Ahmanson Insurance company, Los Angeles. On board.



03-0051 Sheets, Millard.
\$2800.00 **Mexican Indians, Spaniards and Priests.**
Pastel and gold. Circa 1950s. 19.5 x 28.5 inches. Signed in pencil by the artist. Annotated and authenticated by Tony Sheets, the artist's son in 2003. Mural design for a Catholic Church in Ventura, California. On board.



03-0074 Sheets, Millard.
\$2800.00 **Design for a Monumental Building with Abstract Mural.**
Gouache. Circa 1960. 13 x 40 inches. Signed in pencil by the artist. 1.25 inch tear lower center. Paper on board.



03-0073 Sheets, Millard.
\$2800.00 **Design for a Monumental Building (with murals, lake and landscaping).**
Gouache. Circa 1960. 22 x 30 inches. Signed in pencil by the artist. On board.



03-0065 Sheets, Millard.
\$2800.00 **Design for a Monumental Building with Three Diptych Murals. Los Angeles.**
Gouache. Circa 1960. 25 x 25. inches. Signed in pencil by the artist. On board.



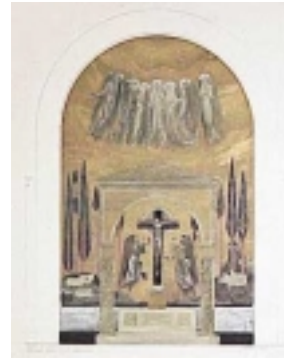
03-0077 Sheets, Millard.
\$2800.00 **Design for a Monumental Building with Murals and Palm Trees.**
Gouache. Circa 1960. 14.5 x 34.5 inches.
Signed in pencil by the artist. On board.



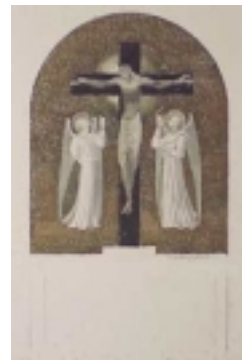
03-0105 Sheets, Millard.
\$1000.00 **Birds in a Tree.**
Gouache. Stained glass design. 1971. 11.5 x 4.25 inches. Signed and dated by the artist. Annotated and authenticated by Tony Sheets, the artist's son in 2003. On board.



03-0062 Sheets, Millard.
\$3800.00 **Life in California.**
Gouache. Circa late 1950s. 19 x 37 inches. Signed in pencil by the artist. Five views. Probably intended as a mural. On board.



03-0056 Sheets, Millard.
\$2800.00 **Design of Mosaic for Sanctuary. Church of our Savior of the Bleeding Heart.**
Gouache. Circa 1950s. 19 x 12 inches. Signed in pencil by the artist. Titled by the artist. Annotated by the artist: Wallace Neff + + Architect.



03-0107 Sheets, Millard.
\$1200.00 **Christ on the Cross with Angels.**
Gouache. Circa 1950s. 7.5 x 6.25 inches. On board. Signed in pencil by the artist.



03-0104 Sheets, Millard.
\$1800.00 **Ordaining a Priest. Mosaic Design.**
Gouache. Circa 1950s. 11 x 22 inches. Crescent shaped. Annotated and authenticated by Tony Sheets, the artist's son in 2003. On board.



03-0058 Sheets, Millard.
 \$2800.00 **The Constructors.**
 Gouache. Circa 1939. 22.5 x 10.5 inches.
 Annotated and authenticated by Tony Sheets, the artist's son in 2003. Mural design honoring labor. On board.



03-0063 Sheets, Millard.
 \$3800.00 **Panorama of America.**
 Gouache. 1948. 15 x 28.5. inches. Signed in pencil by the artist. Probably intended as a mural. On board.



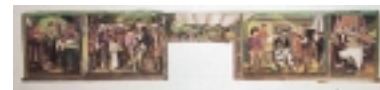
03-0108 Sheets, Millard.
 \$1350.00 **Firemen at Work.**
 Gouache and crayon. Mural design for Fireman's Fund, circa 1950s. 11.5 x 6 inches. Signed and dated by the artist. Annotated and authenticated by Tony Sheets, the artist's son in 2003. On board.



03-0053 Sheets, Millard.
 \$1800.00 **Raised Walk. Open Court. Potiphar's House.**
 Gouache. Circa 1950s. 7 x 34 inches. Signed and titled in pencil by the artist. Annotated and authenticated by Tony Sheets, the artist's son in 2003. Movie set design for Salome. On Studio illustration board.



03-0054 Sheets, Millard.
 \$2800.00 **Muse of the Heavens.**
 Gouache. Circa 1939. 23 x 20.5 inches. Initialed in pencil by the artist. Annotated and authenticated by Tony Sheets, the artist's son in 2003. Mural design for the 1939 Golden Gate International Exposition in San Francisco. On board.



03-0050 Sheets, Millard.
 \$2400.00 **Four Scenes from the the First Hollywood Motion Picture, "The Squaw Man." Directed by Cecil B. DeMille.**
 Gouache. Circa 1950s. 7 x 34 inches. Signed and titled in pencil by the artist. Probably intended as a mural. On board.



50-0001 Sheets, Millard.
 \$2400.00 **From Monument Valley to Yosemite, California.**
 Gouache. Circa 1948. 8.5 x 20.5 inches. Signed in pencil by the artist. Titled and authenticated by Tony Sheets, the artist's son in 2003. On board.



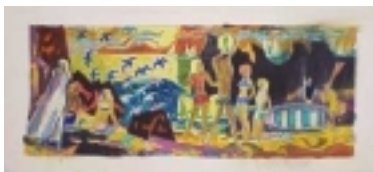
03-0106 Sheets, Millard.
 \$425.00 **Photograph of Mural for the Mayo Clinic, Rochester, Minnesota.**
 Photograph. circa 1950s. Signed and annotated by the artist. 6.5 x 17.5. inches.



03-0085 Sheets, Millard.
 \$1800.00 **Design for a Monumental Building with Mural and Portico.**
 Watercolor. Circa 1960s. 17.25 x 32 inches. Unsigned by the artist. On board.



02-0371 Sheets, Millard.
 \$40.00 **The Pageant History in Northern California.**
 Its colorful and adventuresome beginnings. Published on its 100th Anniversary by American Trust Company, San Francisco. 1950s. Image: 15 x 21.5 inches.



03-0057 Sheets, Millard.
 \$2800.00 **Playing on the Beach in Santa Monica.**
 Watercolor. Circa 1960. 8.5 x 21.5. inches. Signed in pencil by the artist. Annotated and authenticated by Tony Sheets, the artist's son in 2003. Mosaic design from Home Savings in Santa Monica.



02-0372 Sheets, Millard.
 \$40.00 **The Panorama of Today in Northern California.**
 Its resources, activities and opportunities. Published on its 100th Anniversary by American Trust Company, San Francisco. 1950s. Image; 15 x 21.5 inches.