

ALAN WOFSY FINE ARTS

Charles Surendorf - Paintings



50-1444 **[Bridge Leading into Town].**

Oil on board. 1932. Signed. 60.96 x 50.8 cm. On same panel with [Woman in Green Beret].



50-1447 **Still Life**

Oil on board. 1929. signed. Annotated on verso: Pop Art 1929, 60.33 x 50.8 cm.



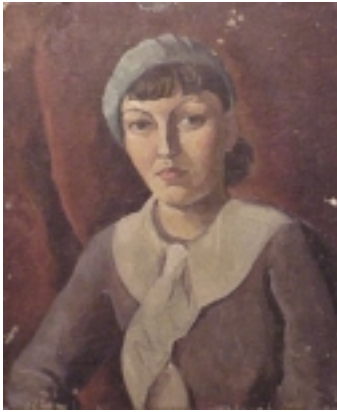
50-1446 **Jim Tyler.**

Oil on board. 1929. Signed. 60.33 x 50.17 cm.



02-0422 **Shacks.**

Oil on board. Annotated on verso: One of My First Oils. 1928; signed. 50.8 x 40.64 cm.



50-1445 **[Woman in Green Beret].**
Oil on board. 61 x 51 cm. On same panel
with [Bridge Leading into Town].



02-0227 **One of My First Oils.**
1928, signed. 50.8 x 40.64 cm.